

NURSING



<b>VISITS, ASSESSMENTS, &amp; SCREENINGS</b>	
Adult Health Clinic Visits	1,955
Blood Pressure Clinics	135
Public Health Visits	273
BCMH Visits	327
Newborn Visits	121
<b>SCHOOL NURSING</b>	
Hearing Screenings	9,437
Hearing Referrals	885
Vision Screenings	10,092
Vision Referrals	1,892
<b>IMMUNIZATIONS</b>	
Adult	1,114
Child	4,704
Flu	5,583
Communicable Diseases	1,317

ENVIRONMENTAL HEALTH



<b>FOOD SAFETY</b>	
Inspections	1,855
Consultations	670
Vending Machine Inspections & Consultations	32
<b>RABIES/ANIMAL BITES</b>	
Investigations and Consultations	209
<b>HOUSEHOLD WATER SYSTEMS</b>	
Inspections and Consultations	172
<b>SOLID WASTE</b>	
Inspections and Consultation	407
<b>MOSQUITO CONTROL</b>	
Complaint Investigations/Larviciding	5,497
<b>PUBLIC SEWAGE</b>	
Inspections	508
Consultations	65
<b>HOUSEHOLD SEWAGE</b>	
Inspections	1,371
Consultations	984
<b>MANUFACTURED HOME PARKS</b>	
Inspections and Consultations	25
<b>PARKS AND CAMPGROUNDS</b>	
Inspections and Consultations	79
<b>SCHOOLS</b>	
Inspections and Consultations	155
<b>PUBLIC SWIMMING POOLS AND BEACHES</b>	
Inspections and Consultations	274
Beach Samples	70
<b>GENERAL NUISANCES</b>	
Investigation and Consultation	492



Lorain County General Health District  
9880 S. Murray Ridge Rd., Elyria, OH 44035  
440.322.6367

Connect with us!

Join us on Facebook, follow us on Twitter @LorainCoHealth and visit us at [www.LorainCountyHealth.com](http://www.LorainCountyHealth.com)

- Let us help you keep up-to-date on issues that impact your health.
- Get tips to keep you healthy.
- Discover how we're working for the health of us all every day.

Birth and Death Certificates available 8:00 am -4:30 pm, by mail or online.

**Our Health District Services more than 150,000 residents of Lorain County...**

Amherst City • Amherst Township • Avon City • Brighton Township • Brownhelm Township • Camden Township • Carlisle Township • Columbia Township • Eaton Township • Elyria Township • Grafton Township • Grafton Village • Henrietta Township • Huntington Township • Kipton Village • LaGrange Township • LaGrange Village • New Russia Township • North Ridgeville City • Oberlin City • Penfield Township • Pittsfield Township • Rochester Township • Rochester Village • Sheffield Lake City • Sheffield Township • Sheffield Village • South Amherst Village • Wellington Township • Wellington Village



Lorain County General Health District  
2014 Annual Report



Making Lorain County  
a Healthy Place to  
Live, Work & Play

A message from the  
Health Commissioner...  
David Covell, RS, MPH

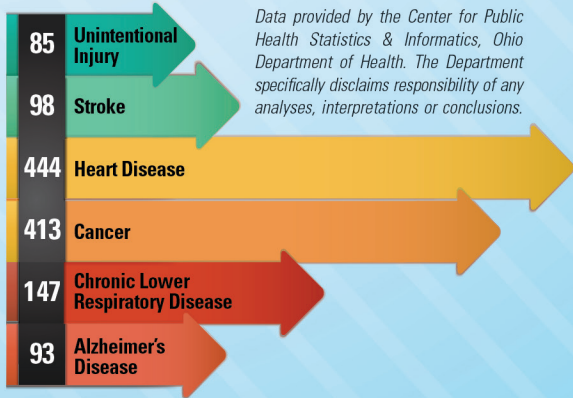
In partnership with community health and wellness leaders, the Lorain County General Health District (LCGHD) released the Community Health Improvement Plan (CHIP) in 2014. This plan helps to focus our joint resources to better impact a variety of public health concerns. The CHIP ties into the mission of each partnering agency towards common goals with specific measureable outcomes.

Additionally, the CHIP allows partners to pool resources and affect change in the community on specific public health problems including smoking for youth and adults, infant mortality, prescription drug abuse, access to preventive care, improving weight and obesity, and mental health concerns. We look forward to leading the weight and obesity initiative, in partnership with the Lorain County Metro Parks, to increase access to physical activity for Lorain County residents.

Our job at the LCGHD is to improve the health of our community and help our residents live healthier lives by creating an environment where the healthy choice is the easy choice. Through the CHIP process our diverse services will be continuously enhanced to better meet the needs of the community. LCGHD staff will continue to work hard every day to make our community a safe and healthy place to live, work, and play.

*David Covell*

2014 LEADING CAUSES  
OF DEATH IN LORAIN COUNTY



# CULTIVATING GROWTH... for the health of us all

At the LCGHD we're passionate about growing change in Lorain County. The Community Health Improvement Plan (CHIP) is rooted in results of the 2011 Community Health Assessment, which indicated areas of focus to improve the health of Lorain County residents.

We continue to work with our partners to support new initiatives and collaborations towards healthier individuals and families, more successful worksites, and happier overall communities for generations to come.



## Community Health Improvement Plan Partners:

Alcohol & Drug Addiction Services Board • Elyria City Health District  
Lorain County General Health District • Lorain County Health & Dentistry  
Lorain County Mental Health Board • Lorain County Metro Parks  
Mercy • University Hospital Elyria Medical Center

## FINANCIALS



### RECEIPTS

Taxes	
Intergovernmental	\$3,170,028
Federal	\$1,344,841
State and Local	\$1,118,179
Charges for Services	
BCMH	\$40,540
Immunizations	\$102,918
Inspection fees	\$65,609
Contractual services	\$665,153
Licenses	\$396,141
Miscellaneous	
Other receipts	\$97,256
Other fees	\$272,495
Refunds	\$327,089
Total Receipts	\$7,600,249

### DISBURSEMENTS

Salaries and benefits	\$5,273,968
Travel	\$89,481
Office supplies	\$68,971
Medical supplies	\$144,013
Equipment	\$133,012
Contracts - repair/ service	\$484,056
Distribution to state	\$294,610
Other expenditures	\$425,607
Total Disbursements	\$6,913,718

## WIC



Certs/recerts	10,312
Client Nutrition Education	8,261

### Board of Health Members:

William A. Spreng, DVM, President • William Gardner, Vice President  
Patricia Schrull, RN, MSN, M.Ed. • Grant Connick, D.O. • Thomas Eschtruth  
Harvey H. Leimbach, DVM • Vivian McCullough • Edward von Hofen

### 2014 Retirees:

Linda Duelley 1993 - 2014

Board member, Gilman Baker 1992 - 2013

We thank Gilman Baker for his 21 years of service, leadership,  
and vision with the Lorain County Board of Health.

